

3 TYPES OF BASEMENT WATERPROOFING SYSTEMS

TYPES OF WATERPROOFING SYSTEMS

The British Standard grades basements and other below ground structures based on their intended use, which then determines the level of waterproofing protection required. Dryspace Solutions classifies waterproofing membranes based on the types detailed in BS8102:2009.

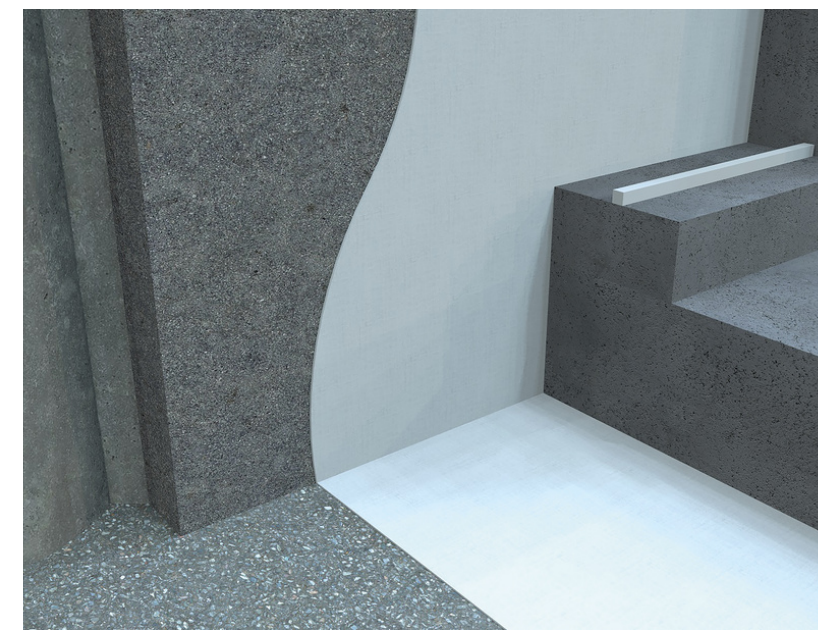
There are many different ways in which a property can be designed and waterproofed to achieve the required Grade, 1, 2 or 3, but all waterproofing systems can be classified into one of these three types:

- Type A - represents systems that are 'applied' to a substrate, either internally, externally or sandwiched.
- Type B - represents 'built-in' systems i.e. the water resistance is built into the structure and would typically include concrete additives and waterstops at joints and junctions.
- Type C - represents 'cavity drain' systems, which are installed to the internal side of a structure, and more accurately described as a 'moisture and water management' system.

TYPE

A

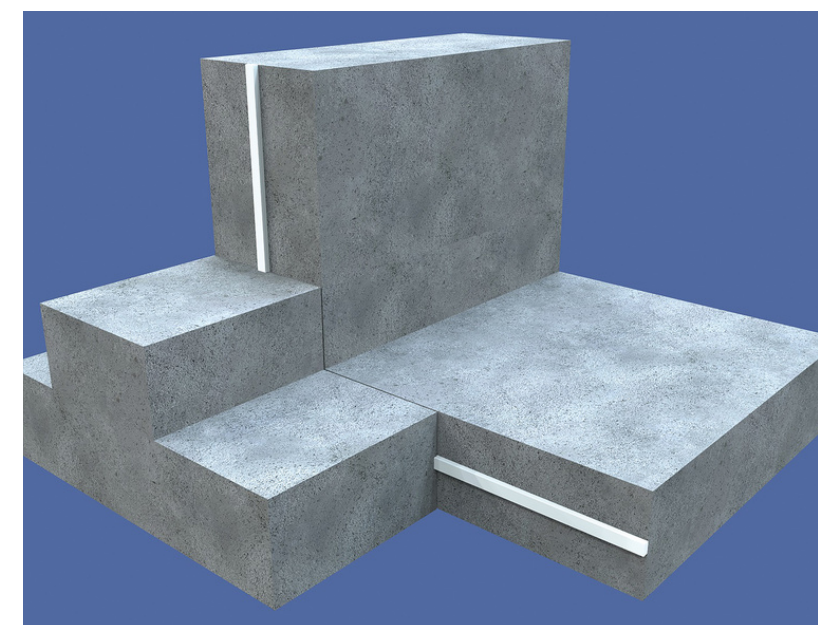
Protection against water ingress by a barrier membrane applied to the structure. This can be applied both internally or externally.



TYPE

B

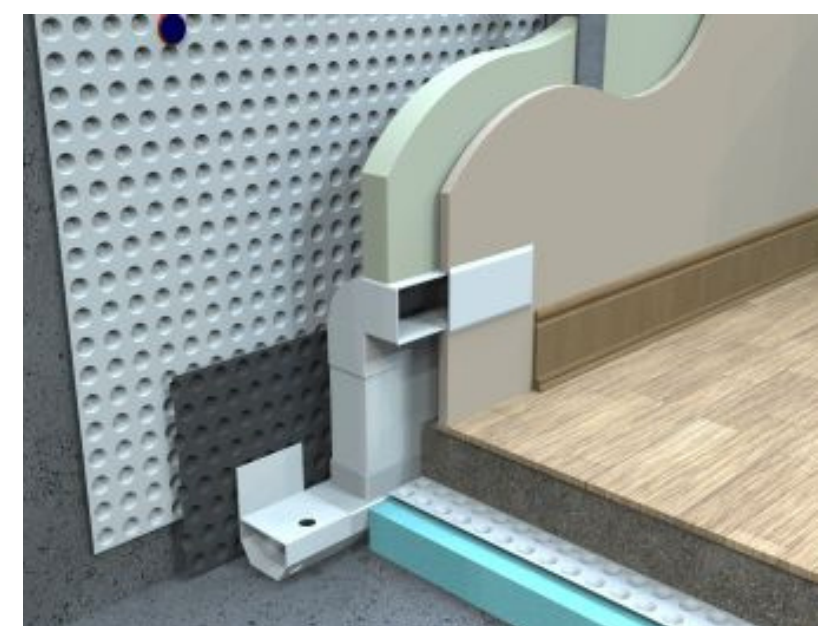
'Structurally integral' joint seals, concrete additives, injectable grouts and epoxies, and maintainable inter joint protection against water transmission.



TYPE

C

An internally maintainable, drained system with dedicated ground water discharge management. Suitable for the management of condensation and water vapour.





Where to now?

Virtually every property with water leak issues will tick at least one, and typically two or more of these indicators of a basement water ingress problem. There can be multiple causes which is not always easy to identify - particularly to the untrained eye.

FOR MORE INFORMATION

WWW.DRYSPACE.COM.AU

Our team of experts can provide you with an obligation free assessment of your home, along with some options for repair - giving you peace of mind.

CONTACT

info@dryspace.com.au

0448 295 633